

MICHELE PELAFAS

SPA BEAUTY HOME HOSPITALITY



Comprehensive Interior Design Program

What is Interior Design?

Interior design is a multi-faceted profession in which creative and technical solutions are applied within a structure to achieve a built interior environment. These solutions are functional, enhance the quality of life and culture of the occupants and are aesthetically attractive. Designs are created in response to and coordinated with the building shell and acknowledge the physical location and social context of the project. Designs must adhere to code and regulatory requirements, and encourage the principles of environmental sustainability. The interior design process follows a systematic and coordinated methodology, including research, analysis and integration of knowledge into the creative process, whereby the needs and resources of the client are satisfied to produce an interior space that fulfills the project goals.



Our Expertise



Michele Pelafas Inc is a leading design firm in the spa, beauty and medical spa industry. Clients include spas, salons, women's and wellness centers, medical spas, nail salons, healthcare facilities, hotel spas and fitness centers. Michele Pelafas Inc provides professional design consultation and strategic interior planning while integrating custom manufacturing and wholesale spa equipment and furniture to owners, operators, consultants, architects and designers across the US and abroad.

Principal and founder, designer, Michele Pelafas, has over 16 years of experience in the spa, beauty and medical spa industry with hundreds of projects in her portfolio including award winning designs. She is an educator and expert in the design field, frequent speaker at industry trade shows and featured in industry trade publications. Michele's company embodies her personal style and passion which is inspired by her love for fashion, travel and trends. However, her greatest passion is creating value and meaning in the smallest of details that make a difference in people's lives through her designs and the interior.

Michele Pelafas Inc offers conceptual and comprehensive design and interior planning in all facets: programming, schematic, development and construction with disciplines in space and floor plan design, computer renderings, 3D illustrations, lighting, color, construction details, theme, feasibility, retail and fixture planning and furniture design with manufacturing.

Our Comprehensive Services

The Journey you will take to build a successful interior calls for skill and experience. We have that and more. We offer guidance, imagination, solutions and practicality as we design and develop every detail, every room and every perspective from floor to ceiling for your unique project requirements and your specific vision. We provide exceptional customer service and a seamless integration of design-build from start to finish. We integrate every creative and functional requirement from room sizes and proper flow to revenue generating opportunities, environmental responsibility and ADA compliance to fit your brand, your budget, your style.

Our comprehensive professional interior design and strategic planning services includes discovery, concept/theme creation, floor plan design, furniture & equipment selection, illustrations, lighting, color and material selection, construction plans and details, elevations, plumbing/electrical/data plans, framing/soundproofing details, door schedules, reflected ceiling plans, retail & fixture planning, custom furniture design, décor and more. From treatment rooms and lounge areas to boutiques and guest locker rooms we create harmony & balance through space design. Together, we can help you accomplish your goals.



The Foundation

What to Expect... The first phase design concept includes an initial design study, a comprehensive interior design concept and presentation materials. This is the foundation to creating a great interior that is both functional and beautiful.



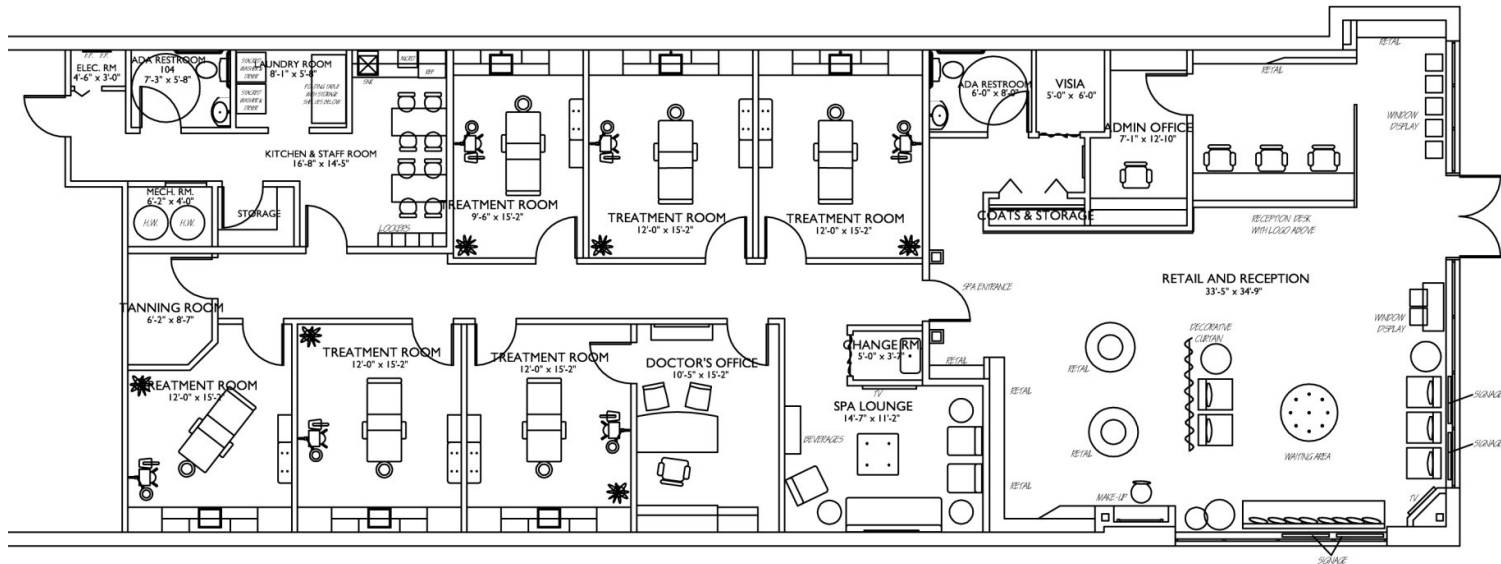
Deliverables include:

1. Space Plan/Floor Plan – Conceptual CAD Drawings
2. Color & Inspiration Board, To establish the overall look and feel
3. Furniture & Equipment Conceptual Selections
4. Materials & Finishes Conceptual Selections
5. 3D Hand Rendering, Qty. 2

Space Plan/Floor Plan

"Layout, flow, function...every square inch of your interior is vital and we make the most of it. We are very discerning when it comes to floor plan design because we know space is valuable and space equals revenue. We have the experience to strike the right balance of space allocation, comfort, effortless transitions and efficient utilization while integrating your specific goals and "wish list" for your project. We will provide you with solid advice and well-developed floor plan options that are effective. We promise...we'll care for your real estate." Let us show you how!

- Michele Pelafas



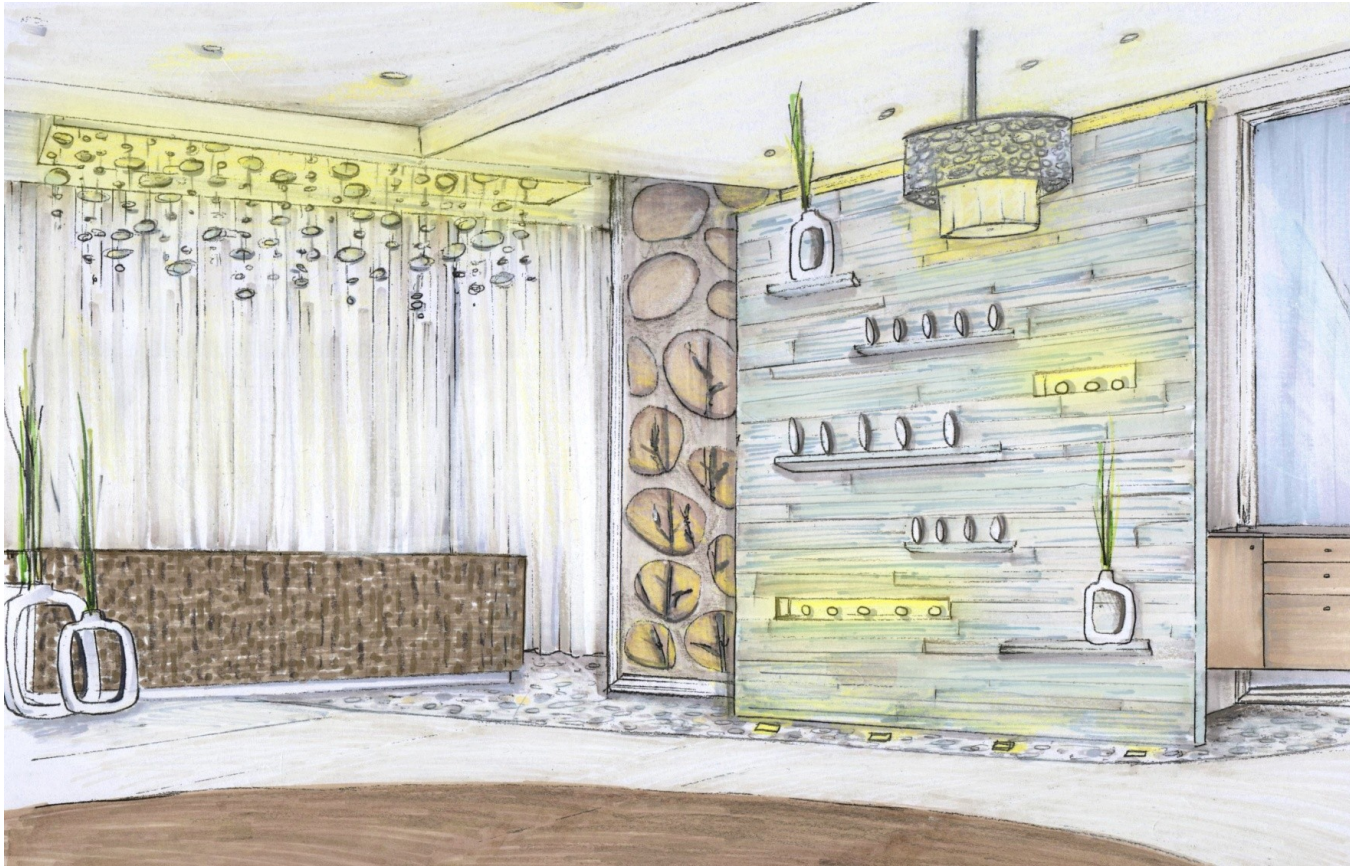
Example of Floor Plan (Shown Above): A Floor Plan is a 2-Dimensional Black and White diagram drawing to scale showing the building walls, interior walls, and or rooms. Also shows furniture and equipment placement within the drawing for most functional use of space. The floor plan is essential in creating the foundation for design moving forward. This is a digital file that can be printed or emailed.

Inspiration Boards



An **Inspiration** or **Mood board** is a type of collage consisting of images, text, and samples furniture, equipment, lighting, or accessories. Presented in a digital file to help establish the direction for the overall mood, concept, and inspirational details as it relates to the overall interior concept.

Rendering 3D Color Hand



Developed by Hand these Color 3D Illustrations are created to show a visual representation of one interior view of a space. These drawings are used to help develop the possibilities within an interior and give a solid foundation for future design development and documentation. All of our work is created "in house" for clients across the country and abroad by our skilled design team.

Furniture, Fixtures, & Equipment

MICHELE PELAFAS
SPA | BEAUTY | HOME | HOSPITALITY

866.990.7750



Item ID: ZM-300131 Fly Bar Stool

Description: With high back and plush seat, the Fly has the most comfort for a barstool. It has a leatherette seat, a hydraulic piston, and an chrome plated foot rest and steel base.

Size: W18.7 x D17.7 x H32.7-40.9

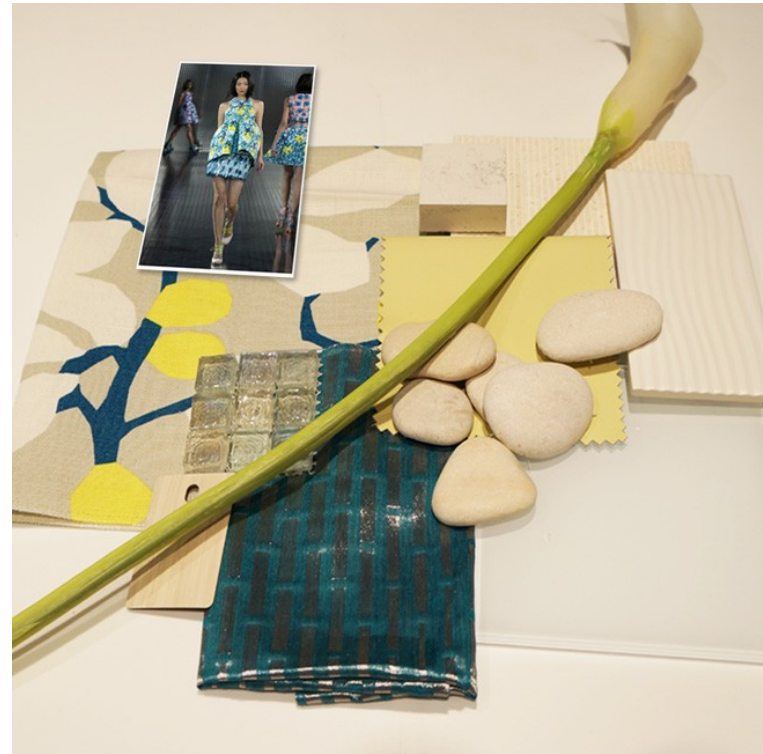
Price: \$130



910 S. RIVERSIDE DR. ELMHURST, IL 60126
www.michelepelafas.com

Preliminary ideas on the style, and function of standard furniture, fixtures, and equipment. Help to aid in establishing project budgets and further establish overall look and feel. Typically several ideas maybe presented and then fine-tuned further in the final design implementation.

Materials & Finishes



Hand selected preliminary materials and finishes are pulled together to create a cohesive interior scheme. These conceptual materials and finishes are fine-tuned with project timing, budget requirements, and final developed interior construction plans to show where they are allocated.

The Foundation Part Two

What to Expect... The second phase design concept is based upon the approved completed floor plan and includes preliminary design and presentation materials for the interior fittings.

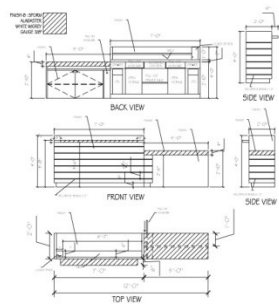


Deliverables include:

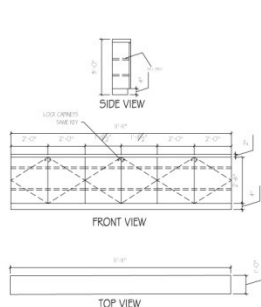
1. Custom Cabinet and Built-in Conceptual Drawings
2. Plumbing Fixtures, Hardware & Appliance Selections
3. Lighting and Ceiling Preliminary Ideas
4. Doors, Moldings, Crown, Trim and other Millwork

The Foundation Part Two

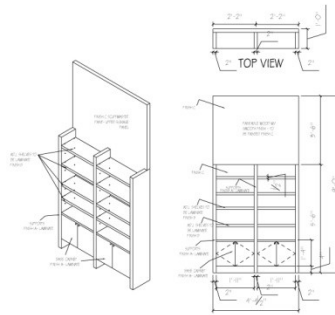
Conceptual Custom Cabinet Drawings



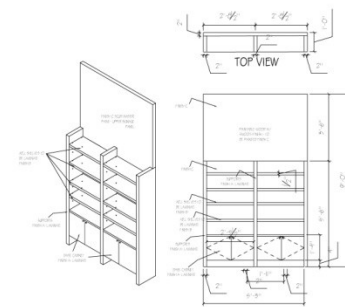
1
A7 CL1 - RECEPTION DESK
NSF



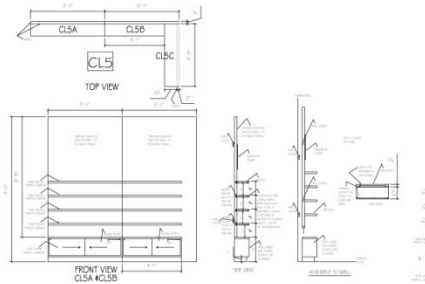
2
A7 CL2 - CREDENZA
NSF



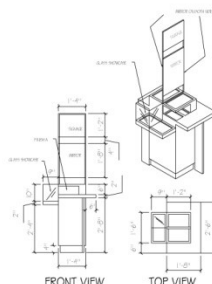
3
A7 CL3 - RETAIL
NSF



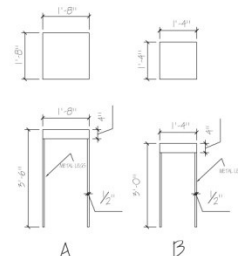
4
A7 CL4 - RETAIL
NSF



5
A7 CL5 - RETAIL
NSF



6
A7 CL6 - SAMPLE PODS
NSF



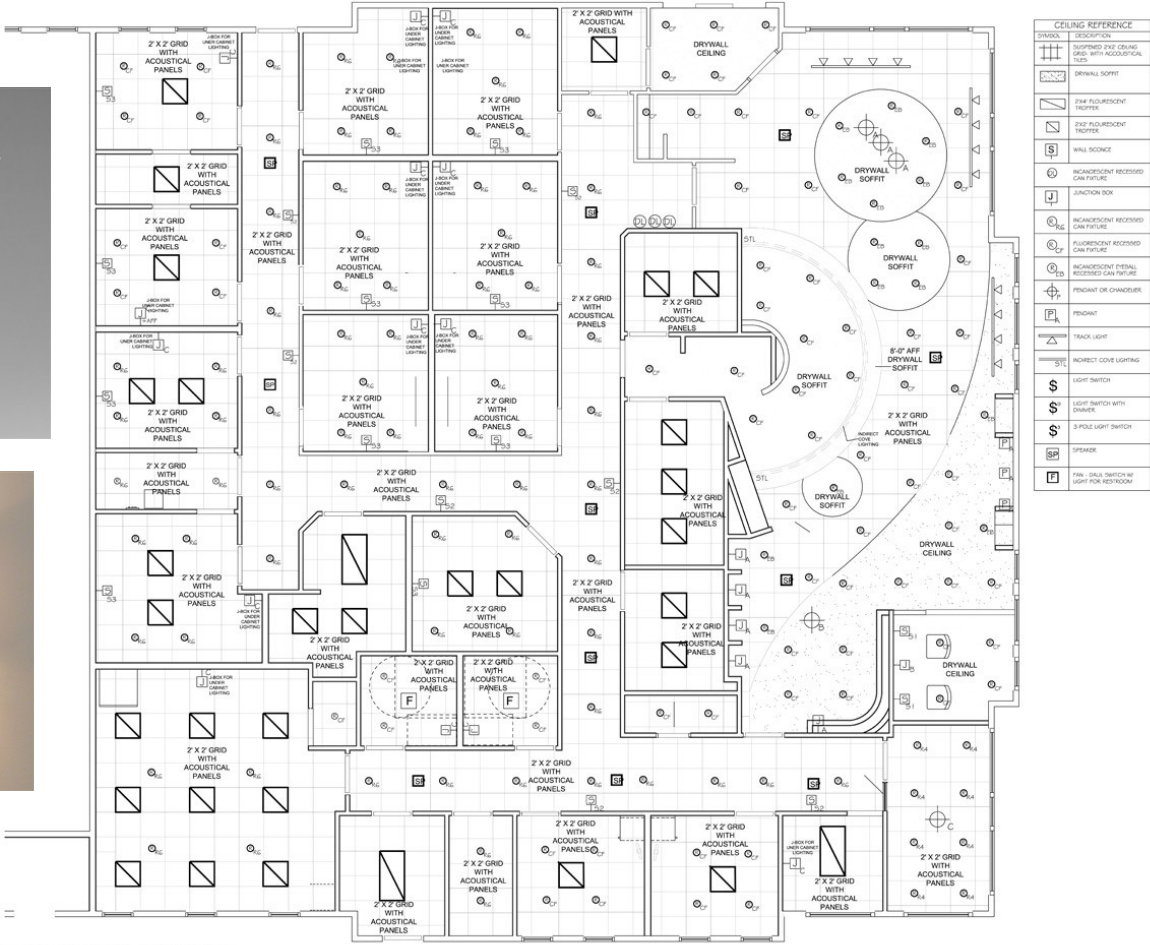
7
A7 CL7 - FREESTANDING RETAIL
NSF

CUSTOM CABINETRY

 MICHELE PELAFAS, INC. Salon and Spa Interior Design 800 Enterprise Dr., Suite 212 (Oak Brook, IL 60521) P: 630.990.7700 F: 630.990.7780	
 STUDIO 23 ARCHITECTS 1000 N. LAKE ST. CHICAGO, IL 60610	
PROJECT: CHRIS LALER, LLC. 9800N. MICHIGAN AVE., SECOND FLOOR SUITE A CHICAGO, IL 60631	
SCALE: NOTED	SHEET A-7
DATE: MAR 08, 2008	

The Foundation Part Two

Conceptual Ceiling and Lighting Plan



PRELIMINARY REFLECTED CEILING PLAN

SCALE: 1/4" = 1'-0"

COPYRIGHT MICHELE PELAFAS, INC. ©

MICHELE PELAFAS, INC.
10150 Highway 29, Suite 2, Houston, TX 77060
P.O. BOX 1007777 • 281.746.7100

PROJECT: RE-111

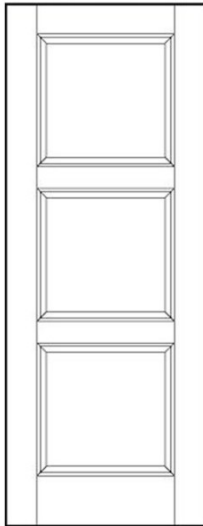
SCALE: NOTED SHEET: A-1
DATE: DEC. 29, '14

The Foundation Part Two

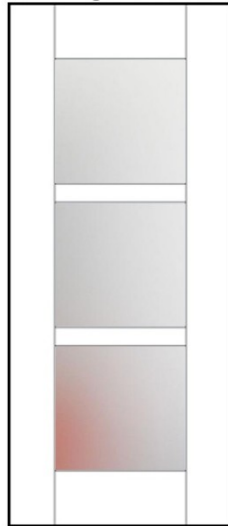
Doors, Moldings, Crown, Trim and Other Millwork

Millwork Package A

Treatment Room &
Office Doors

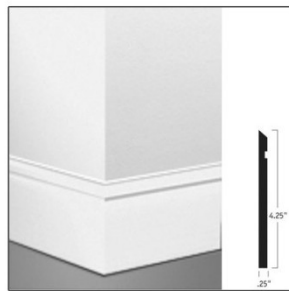


Reception &
Manager's Office



Tru-Stile TS3000 with
Square Sticking
and Raised Panel

Glass:Frosted



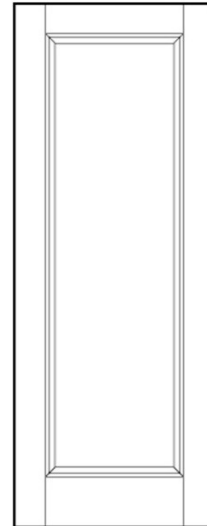
Rubber Baseboard
Moulding
Johnsonite Reveal MW-XXX-F



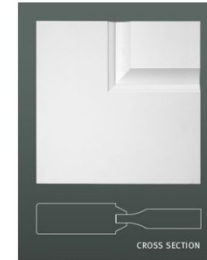
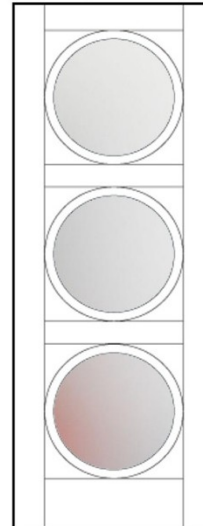
Door and Window Casing
American Wood WM444

Millwork Package B

Treatment Room &
Office Doors



Reception &
Manager's Office

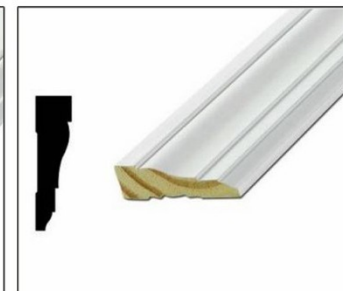


Tru-Stile TS1000 with
Bevel Sticking
and Scoop Panel

Glass: Frosted



Wood Baseboard Moulding
American Wood L163E



Door and Window Casing
American Wood WM361

Design Implementation

Technical

What to expect... Once your interior design concept has received approval, the design team will commence with developing the concept into a detailed documented set of construction documents. This includes documenting the design details and development details, research and sourcing, and project coordination.

- Design Development
- Construction Documents including Plumbing, Electrical, Framing, Ceiling, and Lighting Plans
- Research and Sourcing
- Project Coordination

Design Development

Taking the concept to a place where it meets reality. We use any and all tools from a sketch, elevations, or 3d sketch models, research and sourcing, to find the right balance of the perfect aesthetic, functionality, and product availability to coordinate with the approved concept. This development is crucial to create an accurate and complete set of construction drawings



Construction Documents

Framing/Schematic Plan



SCHEMATIC PLAN

DOOR SCHEDULE										
GENERAL NOTES										
1. TO USE 2-WAY GLASS WITH THE 2" X 4" W/ 2" X 4" GLASS AND LAMINATE GLASS QUARTY AND THE 2" X 4" GLASS.										
2. VERIFY ALL WALLS WITH METAL STUDS AND FRAMES.										
3. VERIFY HEIGHTS OF NEW WALLS.										
4. ALL DOORS TO BE SLIGHTLY ACTION TYPE.										
5. VERIFY ALL DOORS TO BE 2" X 4" W/ 2" X 4" GLASS.										
6. VERIFY ALL DOORS TO BE 2" X 4" W/ 2" X 4" GLASS.										
7. VERIFY ALL DOORS TO BE 2" X 4" W/ 2" X 4" GLASS.										
8. VERIFY ALL DOORS TO BE 2" X 4" W/ 2" X 4" GLASS.										
9. VERIFY ALL DOORS TO BE 2" X 4" W/ 2" X 4" GLASS.										
10. VERIFY ALL DOORS TO BE 2" X 4" W/ 2" X 4" GLASS.										
NO.	SIZE	TYPE	GLASS	SWITCH	DOOR HANDLING	NOTES	LOOKS	QTY		
1	4' 0" x 8' 0"	SLASH	GLASS	YES	SEE NOTE BELOW	2-WAY GLASS WITH 2" X 4" W/ 2" X 4" GLASS QUARTY AND THE 2" X 4" GLASS.	NO	1		
2	4' 0" x 8' 0"	WOOD	NO	YES	SEE NOTE BELOW	VERIFY ALL WALLS WITH METAL STUDS AND FRAMES.	NO	1		
3	4' 0" x 8' 0"	WOOD	NO	NO	SEE NOTE BELOW	VERIFY ALL WALLS WITH METAL STUDS AND FRAMES.	YES	1		
4	4' 0" x 8' 0"	WOOD	NO	YES	SEE NOTE BELOW	VERIFY ALL WALLS WITH METAL STUDS AND FRAMES.	NO	1		
5	4' 0" x 8' 0"	WOOD	NO	YES	SEE NOTE BELOW	VERIFY ALL WALLS WITH METAL STUDS AND FRAMES.	NO	1		
6	4' 0" x 8' 0"	WOOD	NO	NO	SEE NOTE BELOW	VERIFY ALL WALLS WITH METAL STUDS AND FRAMES.	NO	1		
7	4' 0" x 8' 0"	WOOD	NO	NO	SEE NOTE BELOW	VERIFY ALL WALLS WITH METAL STUDS AND FRAMES.	NO	1		

FRAMING LEGEND / NOTES	
	NEW PARTIAL HEIGHT WALL
	EXISTING WALLS TO REMAIN
	NEW FULL HGT. PARTITION
	NEW PARTIAL HEIGHT SOUNDPROOF PARTITION
	NEW SOUNDPROOF PARTITION TO ROOF DECK W/ DBL. DRYWALL W/ SOUND BATTLE, W/ 2" X 4" W/ 2" X 4" GLASS
	DOOR DESCRIPTION
	WALL TYPE DESIGNATION
	DETAIL
	ELEVATION DESIGNATION
	SECTION DESIGNATION
NOTE # 1	DIMENSIONS MARKED HOLD ARE CRITICAL AND MUST BE ADHERED TO.
NOTE # 2	WALL DIMENSIONS ARE TO THE FINISHED WALL.

MICHELE PELAFAS, INC.
 Seton and Spa Interior Design
 800 Emeryville Dr., Suite 212 Oak Brook, IL 60452
 P. 630 990 7750 F. 630 990 7780

STUDIO 23 ARCHITECTS
 1002 N. LAUREL
 CHICAGO, IL 60610

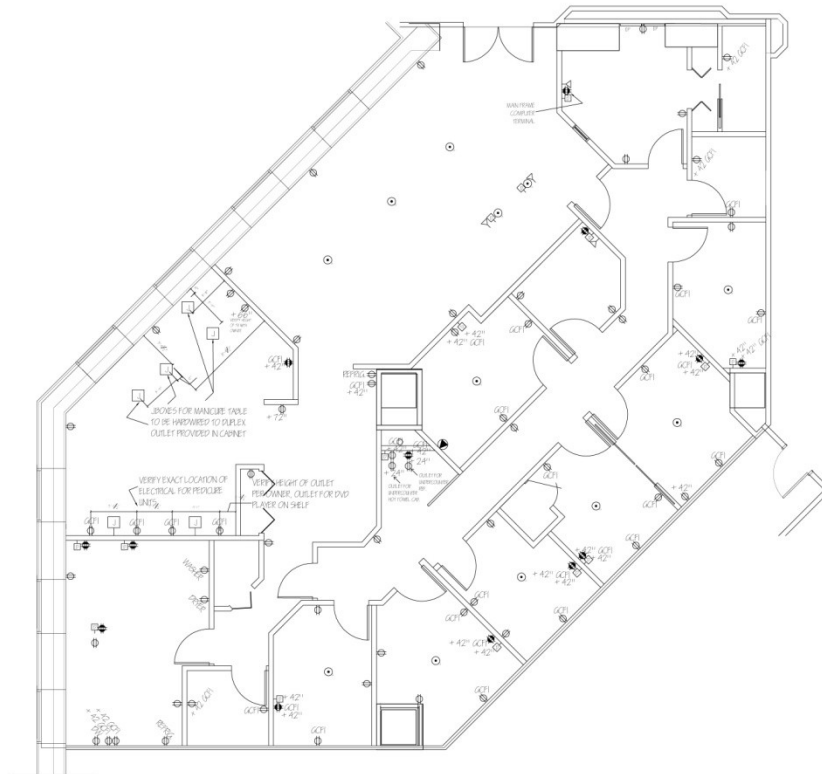
PROJECT: CHRIS LALER, LLC.
 1800 N. MICHIGAN AVE. SECOND FLOOR SUITE A
 CHICAGO, IL 60611

SCALE: 1/4" = 1'-0"
 SHEET
 DATE: MAR 25, 2006 **A-4**

The framing/schematic plan shows the location of interior walls and doors, blocking, soundproofing, wall types, door types, size and thickness of doors, allocation of any elevations or sections.

Construction Documents

Electrical Plan



ELECTRICAL PLAN

ELECTRICAL LEGEND	
SYMBOL	DESCRIPTION
	DUPLEX OUTLET - ONE 120V/15 AMP. CIRCUIT 1" HIGH TO E. AFF.
	JUNCTION BOX
	220 V/ 20 AMP. OUTLET
	POWER SUPPLY
	DUPLEX OUTLET - ONE 120V/ 20 AMP. OUTLET H. HIGH TO E. AFF.
	FOUR-PLEX OUTLET - ONE 120V/ 15 AMP. OUTLET H. HIGH TO E. AFF.
	FOUR-PLEX OUTLET - ONE 120V/ 15 AMP. OUTLET H. HIGH TO E. AFF.
	RECESSED FLOOR OUTLET - ONE 120V/ 20 AMP. RECESSED
	FOUR-PLEX OUTLET - ONE 120V/ 15 AMP. OUTLET H. HIGH TO E. AFF.
	TELEPHONE WALL OUTLET
	TELEPHONE FLOOR OUTLET
	INTERNET ACCESS
	INTERNET ACCESS FLOOR
	PAYPHONE
	PREPARED OUTLET
	DATA
	GAS OUTLET
	TELEPHONE
	DUPLEX GFI ELECTRICAL OUTLET
	GFI - GFI ELECTRICAL OUTLET
	ABOVE FINISHED FLOOR
	ELECTRICAL REFERENCE NOTE

MICHELE PELAFAS, INC.
 Salon and Spa Interior Design
 800 Enterprise Dr., Suite 112 (Oak Brook, IL 60521)
 P. 630.980.7700 F. 630.980.7700

STUDIO 23 ARCHITECTS
 JEFFE LANKS
 (410-492-4002)

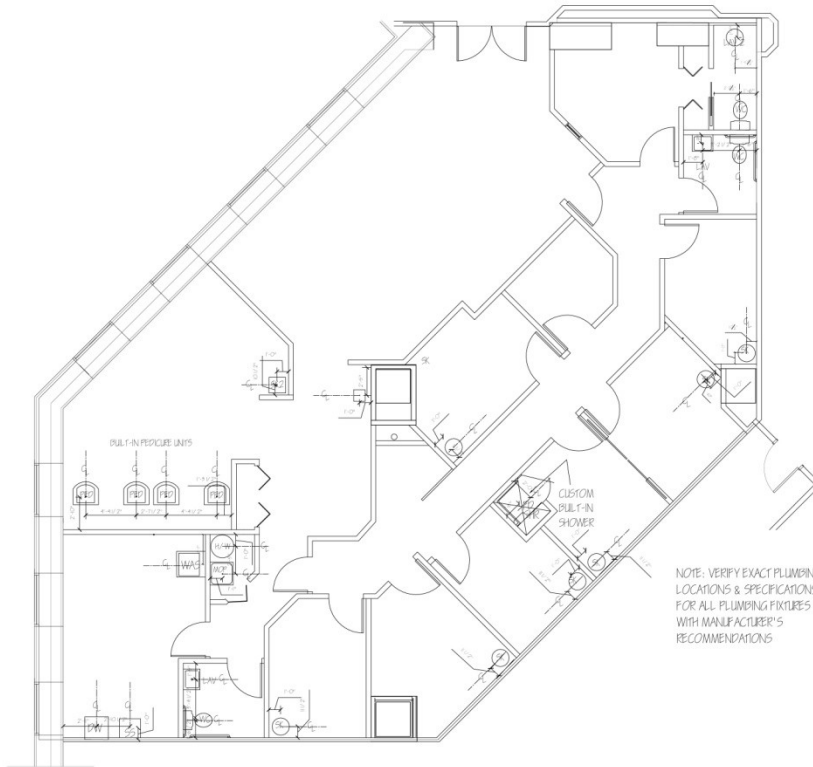
PROJECT: CHRIS LAUER, LLC.
 980 N. MICHIGAN AVE. SECOND FLOOR SUITE A
 CHICAGO, IL 60611

SCALE: 1/4" = 1'-0" SHEET
 DATE: MAR 25, 2006 E-1

The Electrical plan shows the exact types and location of all electrical required. Also includes location of data, phone, and specialty equipment locations.

Construction Documents

Plumbing Plan



PLUMBING PLAN

PLUMBING LEGEND		
ALL PLUMBING FIXTURES & FAUCETS TO BE INSTALLED BY CONTRACTOR		
SYMBOL	DESCRIPTION	PROVIDED BY:
WC	WATER CLOSET	CONTRACTOR
LAV	LAVATORY	CONTRACTOR
LAV 2	LAVATORY	CONTRACTOR
SK	TREATMENT ROOM SINK	OWNER
SK2	DISPENSARY SINK	OWNER
MOP	MOP SINK	CONTRACTOR
SS	SERVICE SINK	CONTRACTOR
SHR	SHOWER	CONTRACTOR
H/W	HOT WATER HEATER	CONTRACTOR
WAS	WASHER/ DRYER	OWNER
PED	PEDICURE UNIT	OWNER
DW	DISHWASHER	OWNER
FD	FLOOR DRAIN	
○	FIGURE DRAIN	
○	COLD WATER SUPPLY	
○	HOT WATER SUPPLY	
—	DRAIN CENTERLINE	

NOTE: FOR ALL ITEMS SUPPLIED BY CONTRACTOR, VERIFY MAKE, MODEL & TYPE WITH OWNER PRIOR TO ORDERING.

MICHELE PELAFAS, INC.
Salon and Spa Interior Design
 800 Enterprise Dr., Suite 212 Oak Brook, IL 60521
 P. 630 940 7750 F. 630 940 7780

STUDIO 25 ARCHITECTS
1311 N. LAKE
 670-481-4922

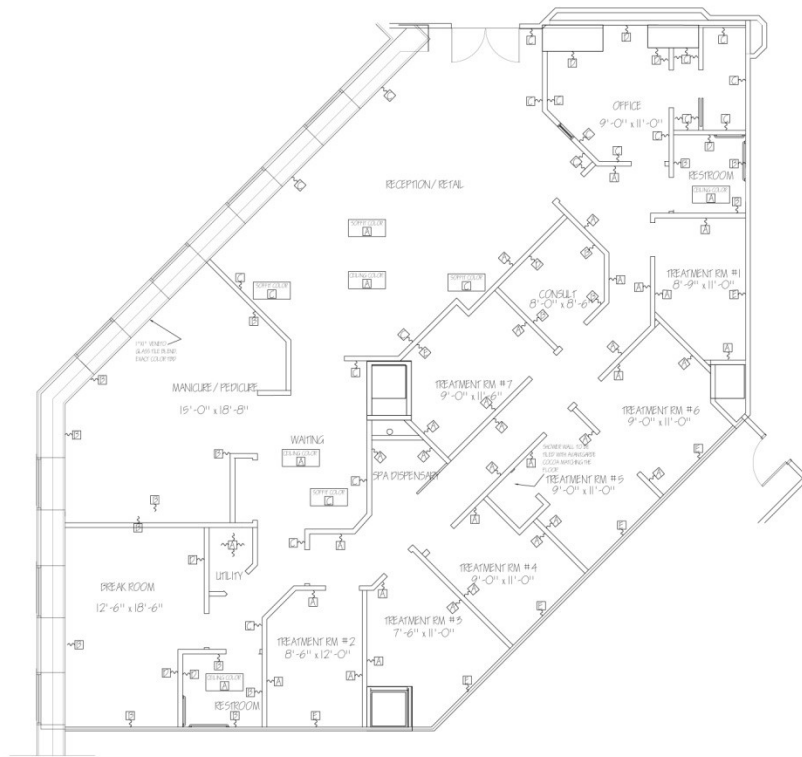
PROJECT: CHRIS LAUER, LLC.
 980 N. MICHIGAN AVE. SECOND FLOOR SUITE A
 CHICAGO, IL 60611

SCALE: 1/4" = 1'-0" SHEET
 DATE: MAR 25, 2006 **P-1**

The Plumbing plan shows the type of plumbing fixture, typically who is supplying the fixture, and the location of where the fixture should be roughed in the interior.

Construction Documents

Wall Finish Plan



WALL FINISH PLAN

WALL FINISH LEGEND	
SYM.	DESCRIPTION
A	BENJAMIN MOORE EGGSHELL FINISH OC-17 WHITE DOVE
B	BENJAMIN MOORE EGGSHELL FINISH OC-32 FAPESTRY BEIGE
C	BENJAMIN MOORE EGGSHELL FINISH OC-11 CLAY BEIGE
D	BENJAMIN MOORE EGGSHELL FINISH AC-2 PERKSHIRE BEIGE
E	BENJAMIN MOORE EGGSHELL FINISH HC-116 GULLFORD GREEN

NOTE:
 VENETIAN GLASS TILE BLEND SIZE: 11"X11" COLORS: L575 OMENTUM, L298 L5417, L5690 HELIOTROPUM TO BE PLACED ON WALL UP TO 10'-0" AFF. GROUT COLOR TO BE VERIFIED WITH OWNER/DESIGNER

TO PURCHASE CONTACT: STONE SOURCE
 WWW.STONE-SOURCE.COM
 PHONE: 912-555-9900

SHOWER TILE: MFRS REFIN. COLLECTION AVANGARDE, COLOR COCOA. TO MATCH FLOOR TILE. SIZE: MOSAIC

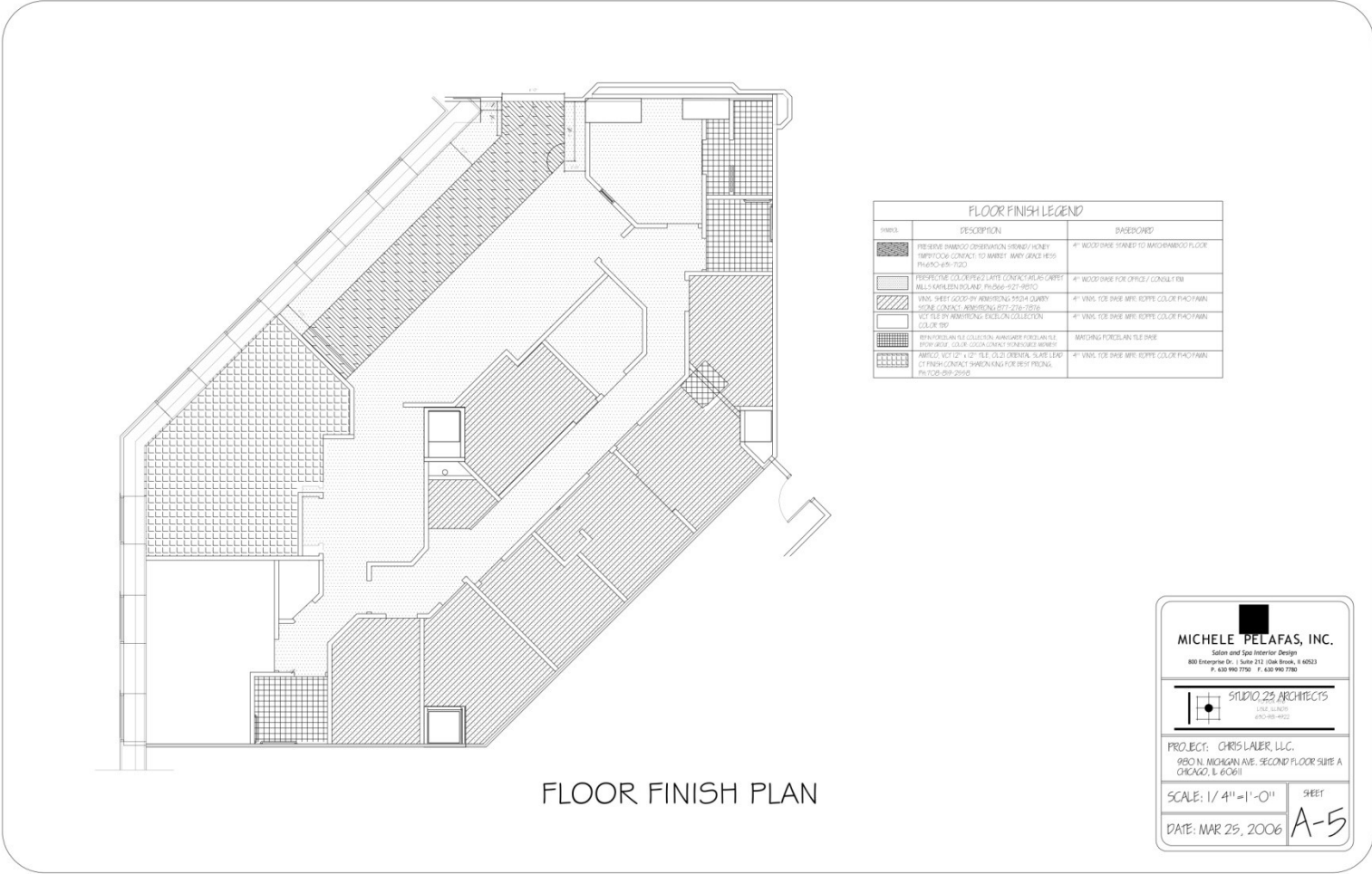
TO PURCHASE CONTACT: STONE SOURCE
 WWW.STONE-SOURCE.COM
 PHONE: 912-555-9900

 MICHELE PELAFAS, INC. <small>Salon and Spa Interior Design</small> <small>800 Evergreen Dr., Suite 112 Oak Brook, IL 60521</small> <small>P. 630 990 7750 F. 630 990 7780</small>	
 STUDIO 23 ARCHITECTS <small>500 S. MICHIGAN</small> <small>4ND-48-4922</small>	
PROJECT: CHRIS LAUER, L.L.C. <small>980 N. MICHIGAN AVE. SECOND FLOOR SUITE A</small> <small>CHICAGO, IL 60611</small>	
SCALE: 1/4" = 1'-0" DATE: MAR 25, 2006	SHEET A-11

Wall Finish Plan –Shows the types and allocation of wall finishes to be applied to the walls. A reference legend is always included to give specifics about the material types and any specialty details.

Construction Documents

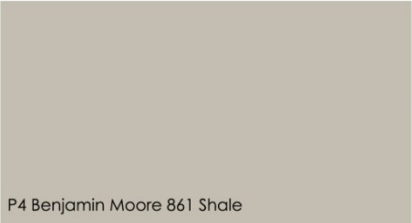
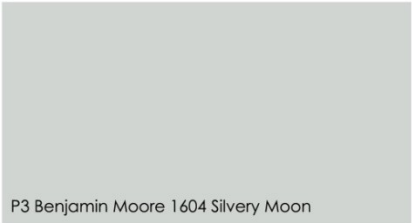
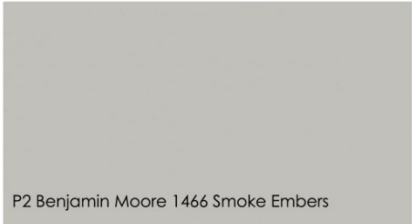
Floor Finish Plan



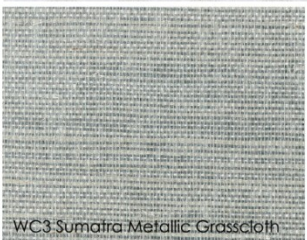
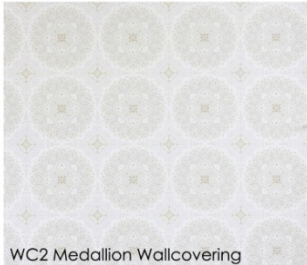
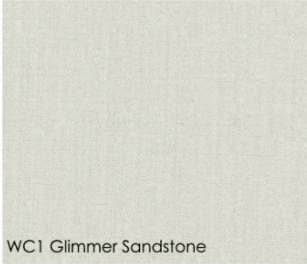
Floor Finish Plan –Shows the types of flooring to be applied to the floor surface. A reference legend is always included to give specifics about the material types and coordinating base board.

Construction Documents

Floor and Wall Finish Samples



Wall Finishes

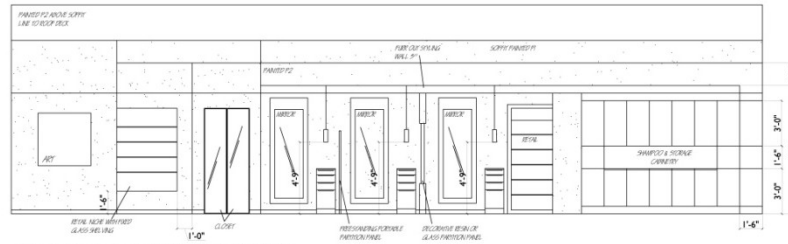


MICHELE PELAFAS

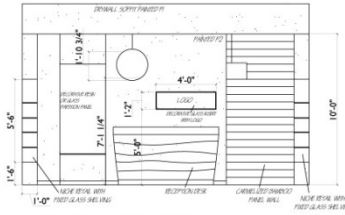
Digital Floor and Wall Finish Sample Board is also provided as a reference to the Floor and Wall Finish plans.

Construction Documents

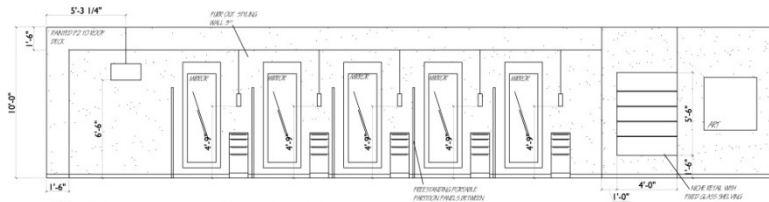
Elevations & Details



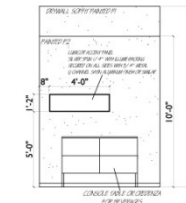
1A RECEPTION STYLING AND SHAMPOO AREA ELEVATION
SCALE: 1/4"=1'-0"



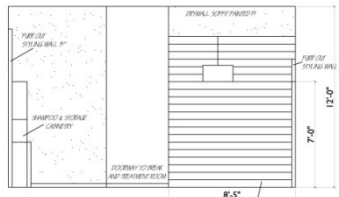
1B RECEPTION AREA ELEVATION
SCALE: 1/4"=1'-0"



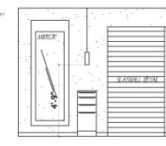
1C RECEPTION STYLING AND DRYER/LOUNGE AREA ELEVATION
SCALE: 1/4"=1'-0"



2 BEVERAGE AREA ELEVATION
SCALE: 1/4"=1'-0"



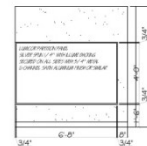
3 DRYER & LOUNGE AREA ELEVATION
SCALE: 1/4"=1'-0"



4A PRIVATE STYLING ELEVATION
SCALE: 1/4"=1'-0"



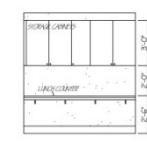
4B PRIVATE RETAIL ELEVATION
SCALE: 1/4"=1'-0"



5 PARTITION ELEVATION
SCALE: 1/2"=1'-0"



6A BREAK ROOM ELEVATION
SCALE: 1/4"=1'-0"



6B BREAK ROOM ELEVATION
SCALE: 1/4"=1'-0"

ELEVATIONS & DETAILS



Elevations are 2D black and white computer drafted drawings that show building details just as heights and location of wall, fixtures, and equipment. Placement of specialty lighting, materials, and finishes or specialty details to clearly show more information on these details..

Other Visuals Tools

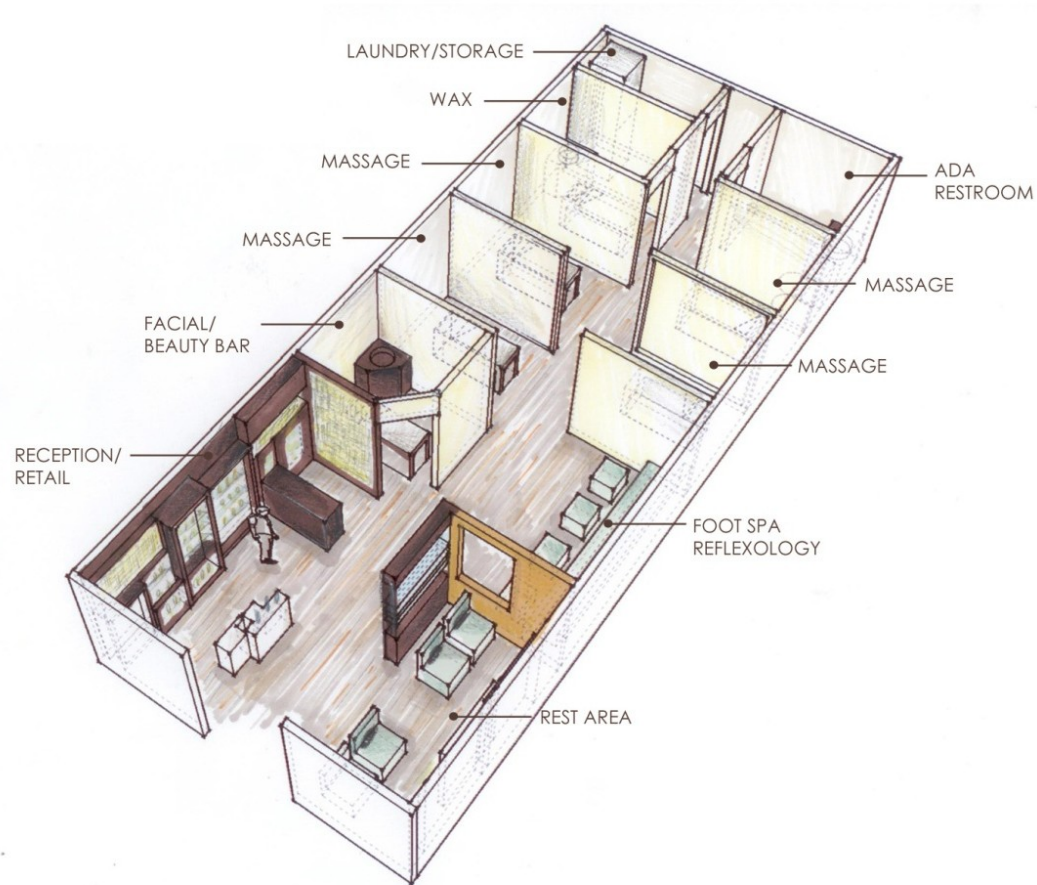
We have a talent for drawing. It is an ability we were born with, perfected over the years and now utilize every day in our career. We know that when it comes to creating a successful spa interior, communication is “key” and illustrations speak 1000 words. As it may be, we articulate many different languages in design to help our clients fully visualize their space. Illustrations are one of the most effective: hand drawn, computer built, napkin sketch – pen, marker or crayon - whatever it takes to help you envision and see your space come to life - before it is built. We can make it real for you.

Rendering 3D Color Computer



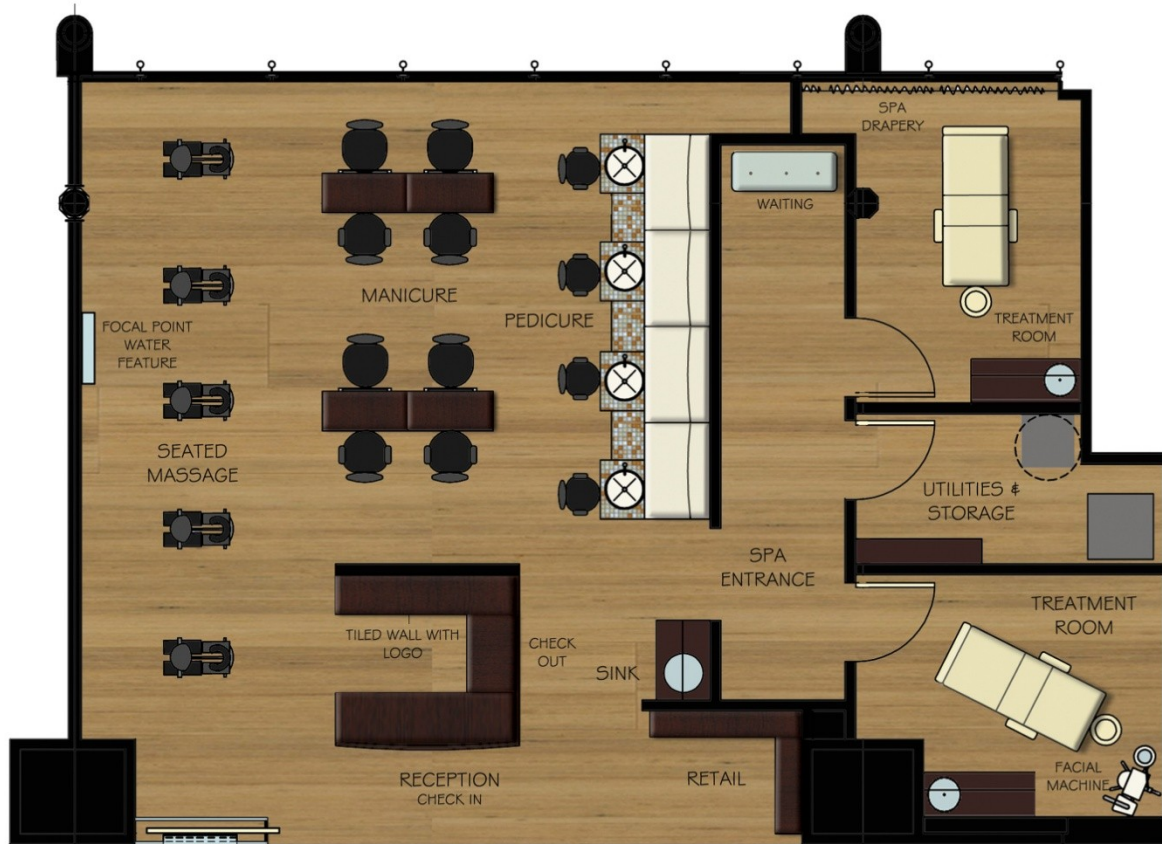
Developed in the Computer these Color 3D Models are created to show a photo-realistic visual representation of one interior view or scene of an interior. Can be used for creating concept or a final tool for what the finished interior could look like. All of our work is created "in house" for clients across the country and abroad by our skilled design team.

3D Color Floor Plan



Developed by Computer these Color 3D Models are created to show a visual representation of one interior view of a space. These drawings are used to develop architectural and design elements within an interior. Can be used for creating concept or a final tool for what the finished interior could look like.

Colored Floor Plan



Developed by Computer these Color 3D Models are created to show a visual representation of one interior view of a space. These drawings are used to develop architectural and design elements within an interior. Can be used for creating concept or a final tool for what the finished interior could look like.

Our Clients

SPAS

Four Seasons Hotel | Baltimore, MD | Spa Waiting, Spa Dining, Hair Salon, Nail Depart. | 2014
Mario Tricoci Salons & Day Spas | Regional Chain | Spa Lounge Room, Retail Store, Lobby Reception, Nail Department'
Rumors Day Spa | Latham, NY | 12,000 sf Interior Design & Building Exterior
Terminal Getaway Airport Spa | O'Hare International Airport | Chicago, IL
Terminal Getaway Airport Spa | Charlotte Douglas International Airport | Charlotte, NC
Neroli Spa & Apothecary | Charlottesville, VA
Old South Barber Spa | Gentleman's Spa | Charleston, SC
Body & Soul Downtown SpaSalon | Dubuque, IA
Body Essentials | Hamilton Bermuda
Red Cottage Spa | Long Grove, IL
Perla Spa | San Juan, Puerto Rico**RETAIL & SPECIALTY BRANDS**
Facelogic International | National Franchise | Multiple Locations
Massage Heights | National Franchise | Over 100 locations
Aveda Concept Store | 5 Senses Day Spa & Salon | Peoria, IL
Tanning & Retail | Ultimate Exposure Concept Retail Store | Chicago, IL
L'oreal & Kerastase Brand Salon | Markus Oliver Salon & Day Spa | Winnetka, IL
H2T Home Spa Systems Store | Minneapolis, MN
Apothecary & Spa | Neroli Spa & Apothecary | Specialty Skin Care & Make-up | Charlottesville, VA
Skin 1 | Retail Skin Care Center | Chicago, IL
Fuchia Spa & Retail Boutique | Chandler AZ
Lingerie Boutique | Belle Lacet Lingerie Store & Retail Boutique | Chandler AZ
Interactive Retail Skin Care Store | Christopher Charles Advanced Skin Care | | Chicago, IL
Infinity Spa | Cary, IL
Christopher Charles Advanced Skin Care Spa | Chicago, IL
Spa Bellezza | Falmouth, MA

NAIL SPAS & SALONS

Dior Institut | Paris, France - Hotel Plaza Athenee | Nail Lounge
A Polished Nail for nail celeb Katie Cazola | Hollywood, CA
Luxe Nail & Spa Boutique | Wilshire Blvd, Beverly Hills, CA
Hand & Foot Spa | Chelsea, London UK
Boutique Spa | Nails Beauty Massage | Bayswater, London UK
Four Seasons Hotel | Jackson Hole, WY | Custom Pedicure Furniture
Four Seasons Hotel | Los Angeles | Custom Pedicure Furniture
Four Seasons Hotel | Baltimore, MD | Nail Department Renovation & Custom Furniture
Spa Fly | Mobile Spa | Phoenix, AZ
Excelsior Nails & Spa | Excelsior, MN
Prim & Posh Nail Salon | New Orleans, LA

FITNESS

Panama City Health Club | Panama, FL
Equilibre Gym & Spa | Ar Rifa, Bahrain, United Arab Emirates
Yaiyari Spa & Fitness | Sonesta Gran Posada Resort, San Carlos, MX
Crescent Bay Resort | Fitness Center | Quincy, WA
Montreal Fitness Center | Ontario, Canada
Rough Cut Fitness Spa & Club | Sedona, AZ
East Bank Club | Salon | Chicago, IL

RETAIL & SPECIALTY BRANDS

Facelogic International | National Franchise | Multiple Locations
Massage Heights | National Franchise | Over 100 locations
Aveda Concept Store | 5 Senses Day Spa & Salon | Peoria, IL
Tanning & Retail | Ultimate Exposure Concept Retail Store | Chicago, IL
L'oreal & Kerastase Brand Salon | Markus Oliver Salon & Day Spa | Winnetka, IL
H2T Home Spa Systems Store | Minneapolis, MN
Apothecary & Spa | Neroli Spa & Apothecary | Specialty Skin Care & Make-up | Charlottesville, VA
Skin 1 | Retail Skin Care Center | Chicago, IL
Fuchia Spa & Retail Boutique | Chandler AZ
Lingerie Boutique | Belle Lacet Lingerie Store & Retail Boutique | Chandler AZ
Interactive Retail Skin Care Store | Christopher Charles Advanced Skin Care | | Chicago, IL

MEDICAL SPAS & WELLNESS

Elmhurst Memorial Hospital | Women's Ultrasound & Mammogram Department | 2013
Mayo Clinic, Healthy Living Center | Rochester, MN | Custom Spa Furniture | 2014
Presh Medical Spa | Spa & Retail | Fort Lauderdale, FL
Nourish Medspa | Spa & Retail | Lombard, IL
Glow Medical Spa | Spa Salon & Retail | Irving, TX
Facial Aesthetic Concepts | Spa & Retail | Santa Margarita, CA
Blissful Medical Spa | Spa & Retail | Denver, CO
Om Chiropractic Spa | Spa & Retail | Charlotte, NC
Dr Grady Dental Spa | Dental Spa & Retail | Round Hill, VA
Med Spa of Virginia | Spa & Retail | Cullpeper, VA
Renew Med Spa | Spa & Retail | Windham, NH
Advanced Medical Aesthetics | Spa & Retail | Deer Park, IL

HAIR SALONS & BLOW DRY - BEAUTY BARS

Primp & Blow, A Dry Bar | Scottsdale, AZ & Phoenix, AZ
Rumors Salon & Day Spa | Latham, NY | 12,000 sf Location
Rumors IV Men | Latham NY | Men's Salon & Spa
Paradigm Salon | Longhorne, PA
Luxe Bar | Peabody, MA
Mario Tricoci Salon & Day Spa | Oak Brook, IL
Mario Tricoci Salon & Day Spa | Arlington Heights, IL
Mario Tricoci Salon & Day Spa | Schaumburg, IL
Goldplated, a finishing salon | Blow Dries & Make-up Boutique | Chicago, IL
Gary Charles & Associates | Philadelphia, PA
Mario Tricoci Salon & Day Spa | Old Orchard Mall, Skokie, IL
Tricoci University of Beauty Culture | Cosmetology & Beauty School | Over 7 locations regionally

MICHELE PELAFAS

SPA BEAUTY HOME HOSPITALITY

www.michelepelafas.com

866.990.7750